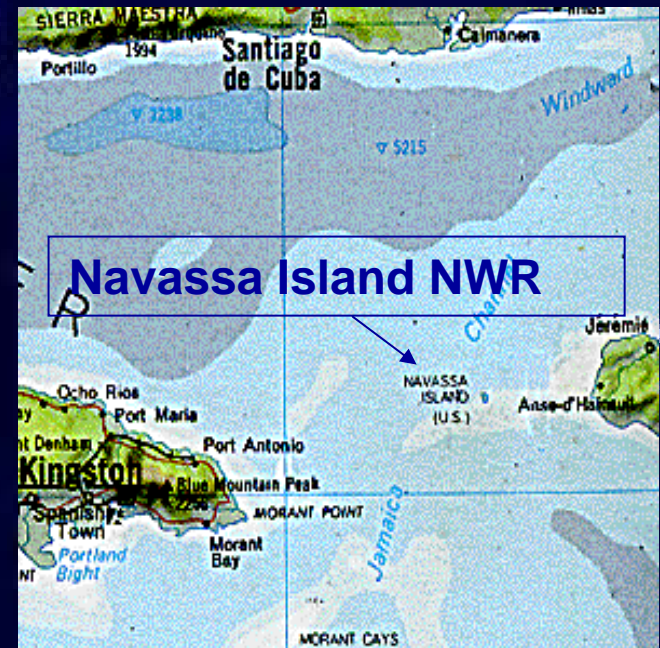
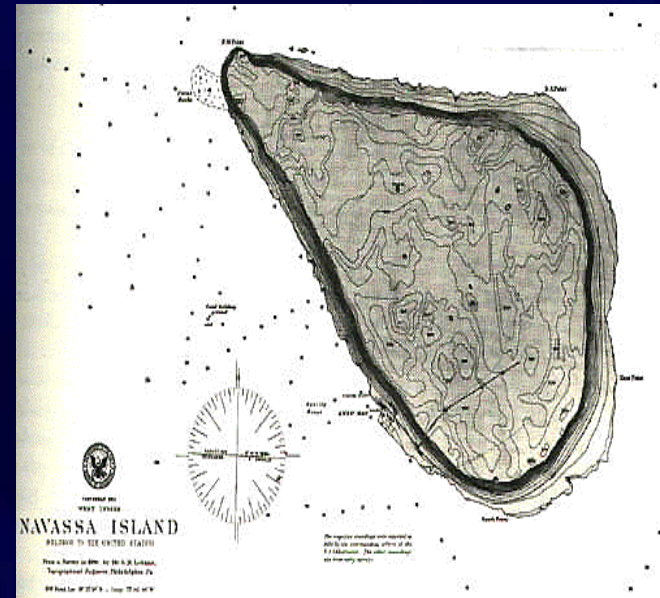


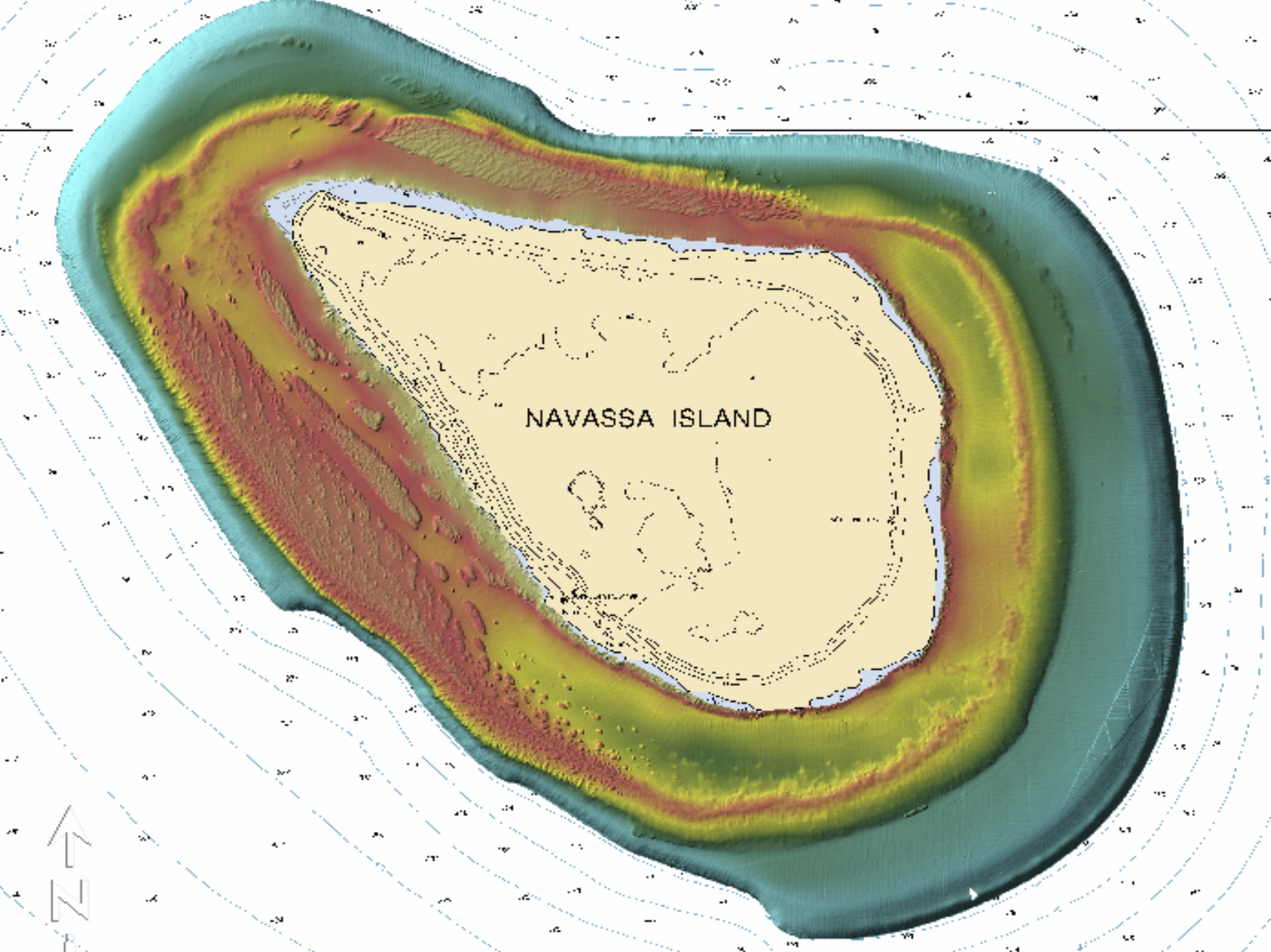
Navassa Island

35 miles SW of Haiti

90 miles SE of Cuba

85 miles NE of Jamaica

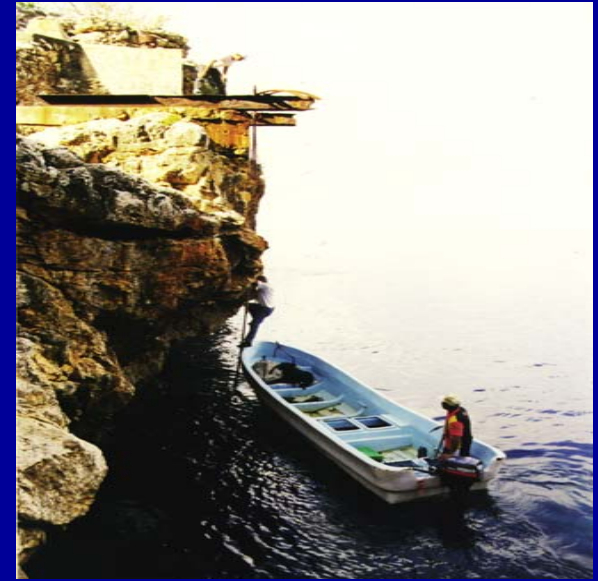




NAVASSA ISLAND

Navassa National Wildlife Refuge

366,800 acres (land and water)
Boundary = 12nm territorial sea



Concerns

- Illegal fishing of reef species & federally-protected species
- Lack of enforcement



**Cited Research: NOAA Fisheries
- fishing pressure increasing**



Observed declines in reef fish biomass & size (2002 - 2004)

CRTF Member's Commonalities

- Remote coral reef areas are our “crown jewels”.
- Declining coral reef ecosystem health.
- We all have limited resources & capacity.
- Shared challenges = shared opportunities.

Can we address our collective challenges?

- ➔ ***ACTION:*** Navassa follow-up with FWS, NOAA, other CRTF partners, and MCBI.
- ➔ ***FUTURE OPPORTUNITY:*** Set the stage to deal with other similarly concerned remote coral areas.